

1998 PMT vs Now PMT

Total PMT 64.25 65.33 69.91

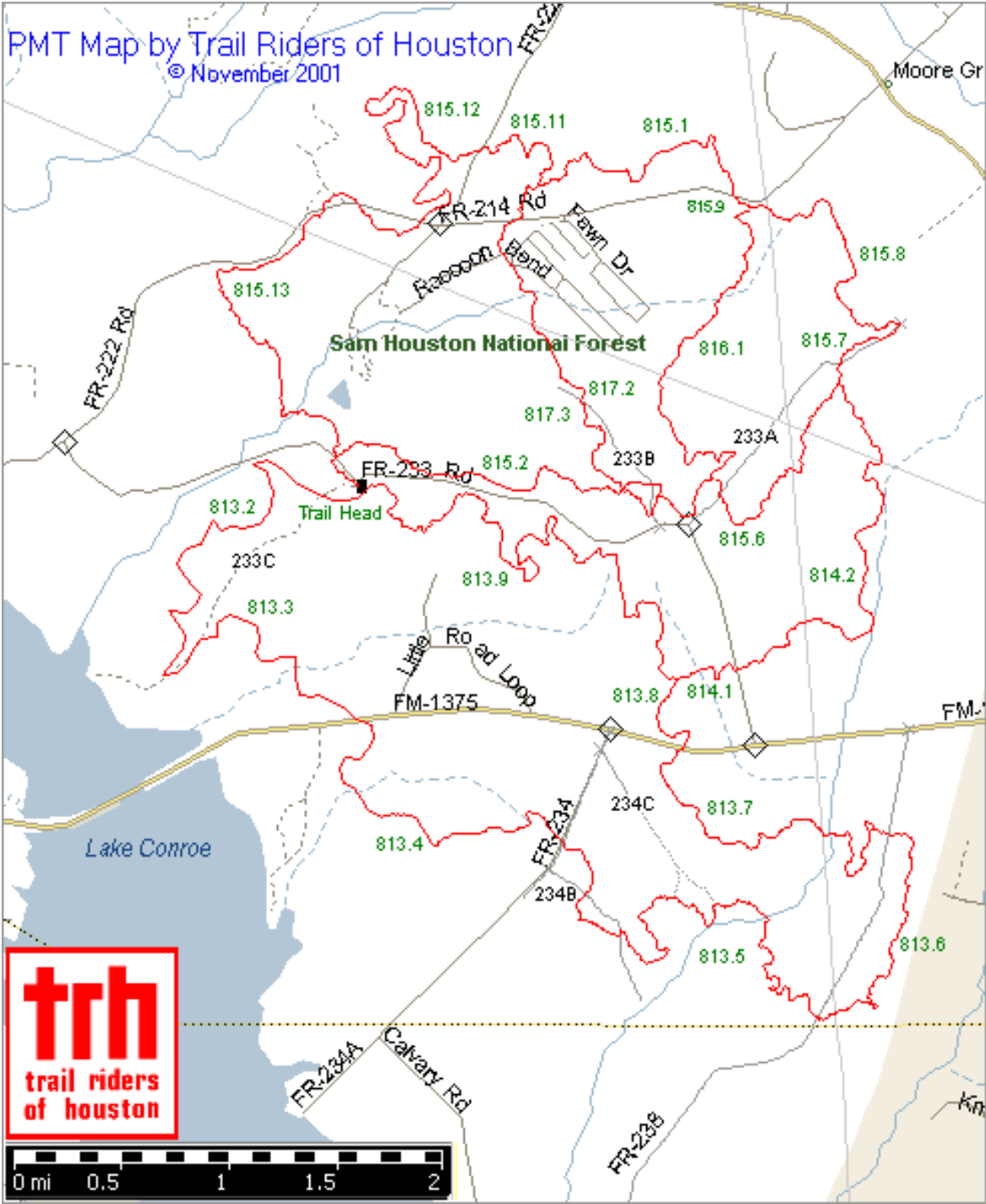
East Side of Lake

Section	2001 Mileage	1999 Mileage	1998 Mileage	+ / -	Intersection	Name
813.1	0.34	0.33	0.33	0.01	233C	
813.2	2.52	2.54	2.51	0.01	x 233C	
813.3a	0.03	1.81	1.47	0.37		Original PMT
813.3alt						1.47 Brown Branch
813.3b	1.81				x 1375	
813.4	2.04	2.31	2.35	(0.31)	x 234	Blind Owl
813.5a	0.36	1.37	1.35	(0.99)	x 234B	
813.5b	0.36	2.88	2.45	0.84	x 238	610 Trail
813.5c	2.93				x 234B	
813.6	1.78	1.90	1.79	(0.01)	x 238	Topless Trail
813.7	2.40	2.42	2.43	(0.03)	x 1375	Beaver Bridge
813.8	0.58	0.68	0.57	0.01	814.1 / 813.9	
813.9a	0.97	1.10	1.10	(0.13)	813.9x	
813.9b	3.06	3.13	3.25	(0.19)	TH	
813.9x						0.06 to 233
814.1	0.46	0.37	0.37	0.09	x TC Rd	
814.2	2.63	2.59	4.22	(1.59)	@815.6	White Trail
815.1	0.22	0.50	0.50	(0.28)	233 +	
815.2	2.06	2.04	2.08	(0.02)	x 233B	Fern Trail
815.3	0.10	0.13	0.13	(0.03)		233B to Bultaco
815.4	0.48	0.50	0.50	(0.02)		Bultaco to YCC
815.5	0.13	0.13	0.13	0.00		YCC to 233A
815.6a	1.36	1.36	1.46	(0.10)	@814.2	
815.6b	0.02	0.10		0.02	x 233A	
815.7	0.54	0.54	0.54	0.00		
815.8	1.63	1.65	1.65	(0.02)		North Trail
815.9	0.10	0.10	0.10	(0.00)		YCC to North Road
815.10	1.66	1.66	1.65	0.01	7.7 Split	HorseHead Pump
815.11	0.81	0.80	0.75	0.06	x 222	
815.12	2.63	2.65	2.65	(0.02)	x 222	
815.13a	0.40	2.76	2.70	0.15	233	Broken Bridge
815.13b	0.16					
815.13c	0.09					
815.13d	2.20					
816.1	2.50	2.50	2.50	0.00		YCC
817.1	0.29	0.40	0.40	(0.11)	x 214	7.7 to North Road
817.2	1.28					
817.3	0.87					
817.4	0.58	2.21	2.20	0.53		Bultaco Trail
<b>Total</b>	<b>42.38</b>	<b>43.46</b>	<b>44.13</b>	<b>(1.75)</b>		
	<b>(1.75)</b>	<b>(0.67)</b>	0.00			

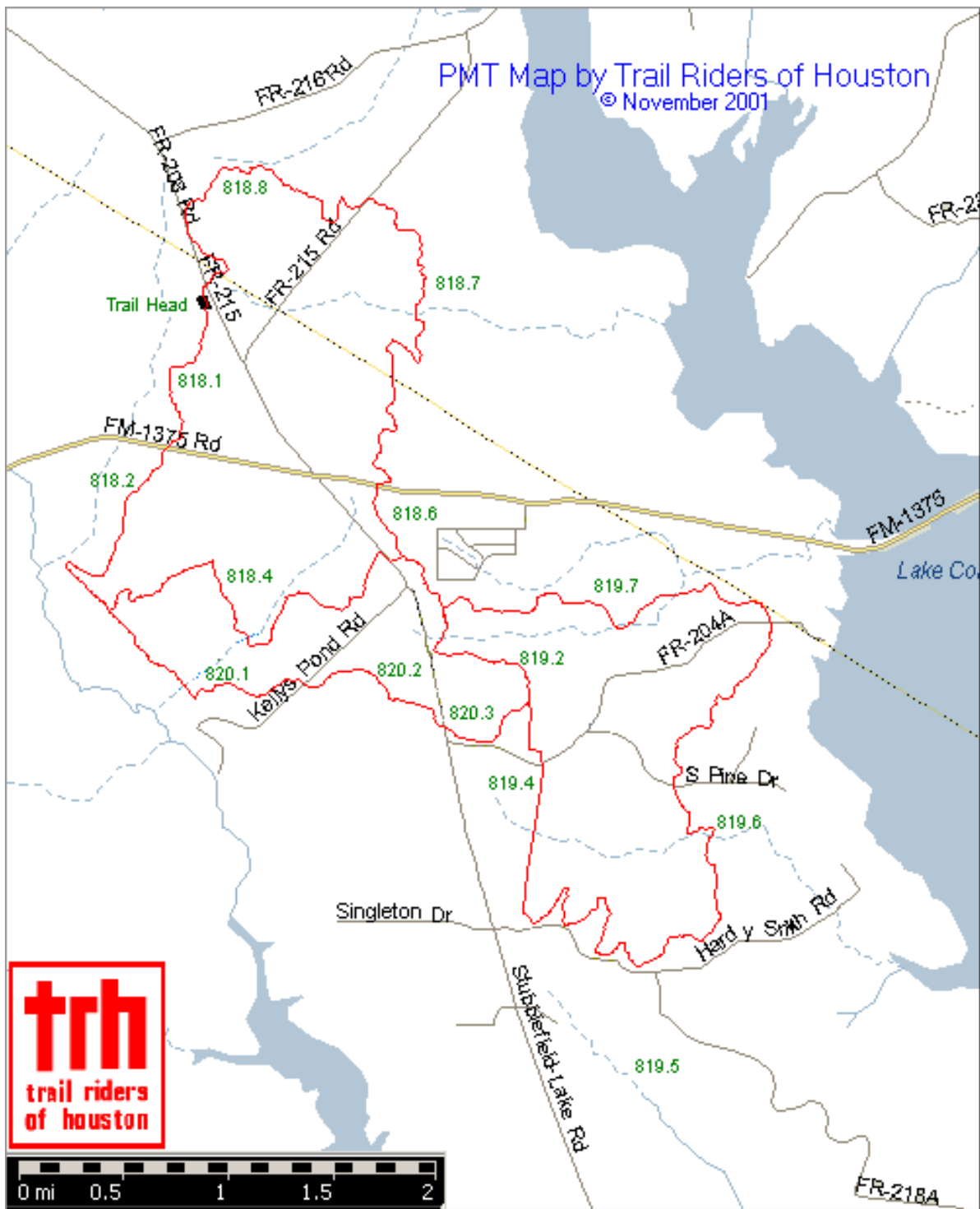
West Side of Lake

<u>Section</u>	<u>2001 Mileage</u>	<u>1999 Mileage</u>	<u>1998 Mileage</u>	<u>+ / -</u>	<u>Intersection</u>	<u>Name</u>
X TH	0.17	0.17	0.10	0.07	SE Gate	Start @ Bulletin Board
818.1a	0.57	0.57	0.57	0.00	#3	
818.1b	0.31	0.31	0.35	(0.04)	x 1375	
818.2	1.30	1.30	1.30	0.00	@ 820.1	
818.3	0.84	0.84	0.84	0.00	x 204B	
818.4a	0.26	0.26		0.26	Touch Road	
818.4b	0.38	0.38	0.64	(0.26)	near pipeline	
818.4c	1.38	1.38	1.25	0.13	x 204	
818.5	0.05	0.05	0.05	0.00		Hardy's Y
818.6	0.40	0.40	0.40	0.00	x 1375	
818.7	2.88	2.88	2.80	0.08	x 215	Picture Bridge
818.8a	1.11	1.11	1.16	(0.05)	@ #31	
818.8b	0.77	0.77	0.77	0.00	x 208	
819.1	0.42	0.42	0.39	0.03	@ 819.7	
819.2	1.20	1.20	1.20	0.00	@ 820.3	
819.3	0.46	0.46	0.43	0.03	x 204A	Rerouted 4/18/98 for RCW
819.4	0.73	0.73	0.80	(0.07)		Tram
819.5	2.26	2.26	5.04	(2.78)		New Section
819.6a	0.46	0.46	1.42	(0.96)	x Driveway	
819.6b	0.95	0.95	0.90	0.05	x 204A	
819.7	2.11	2.11	2.45	(0.34)		Sand Road
820.1a	0.71	0.71	0.70	0.01		
820.1b	0.58	0.58	0.52	0.06	Kelly Pond Hill	
820.2	1.02	1.02	1.12	(0.10)	x 271	Kelly Pond Road
820.3	0.55	0.55	0.58	(0.03)	x 204	Rerouted 4/18/98 for RCW
<b>Total</b>	<b>21.87</b>	<b>21.87</b>	<b>25.78</b>	<b>(3.91)</b>		
	(3.91)	(3.91)				

PMT Map by Trail Riders of Houston  
© November 2001



PMT Map by Trail Riders of Houston  
© November 2001





PMT Map by Trail Riders of Houston  
© November 2001

